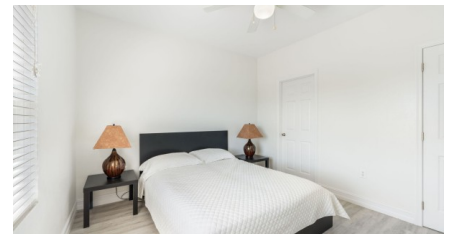
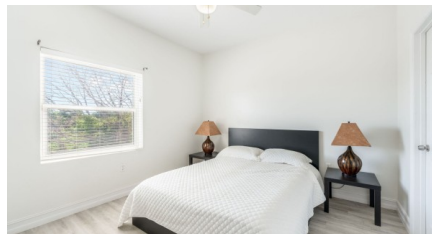


**#30 EXECUTIVE SUITES, PRIME LOCATION | 2 BED MIDDLE UNIT**

George Town South

MLS# 419073

**CI\$390,000**





**Zane Kuttner**

+1 (345) 321-4611

[zane.kuttner@remax.ky](mailto:zane.kuttner@remax.ky)

**PLEASE NOTE: PHOTOS AND THE VIRTUAL TOUR ARE OF A SIMILAR UNIT AND ARE PROVIDED ONLY FOR REFERENCE. BUT ALL UNITS HAVE A SIMILAR LAYOUT AND DESIGN!**

**Executive Suites - Your New Home Awaits! Centrally Located Comfort and Style**

Welcome to Executive Suites, a premier gated community in the heart of Central Georgetown on Walkers Road, situated over 15ft above sea level, the highest point in George Town. Offering both one-bedroom and two-bedroom residences, Executive Suites combine modern comfort, convenience, and affordability, making these homes perfect for first-time buyers and investors. Enjoy low strata fees, and a prime location within walking distance to George Town.

Experience elegant and spacious living in the two-bedroom Executive Suites, offering 831 SQFT of well-designed and upgraded interiors. Upon entering, double-height ceilings create a sense of openness, and natural light floods the space, enhancing the open-plan living and dining area. The home extends into a modern galley-style kitchen, perfectly suited for functionality and style.

**Key features include:** Spacious guest bedroom (downstairs) with ensuite & built-in closets

Primary bedroom (upstairs) with bay window, ensuite, & two built-in closets

Wood-look tile floors & contemporary furnishings

Fully furnished & move-in ready

Washer & Dryer included

Solid block walls for enhanced privacy and energy efficiency  
Perfectly positioned near key amenities, these residences are just minutes from Smith Cove, the hospital, and the new Hurley's Market, ensuring easy access to shopping, dining, and entertainment. With strong rental demand, these apartments present excellent investment opportunities for those looking to secure a high-yield property in a sought-after location.

**Ideal for Homeowners or Investors** These two-bedroom units make a fantastic family home or a profitable investment. As a popular rental property, these units offer strong returns, low vacancy rates, and long-term value.

**Gated Community Living** At Executive Suites, safety and security are a priority. Enjoy the peace of mind that comes with living in a gated community with controlled access, ensuring a secure environment for you and your loved ones.

**Low strata fees**

Don't miss this rare opportunity to own a modern, secure, and well-located property at an unbeatable value.

Schedule your tour today and discover why Executive Suites is the perfect place to call home or invest!

## Property Features

|                        |              |        |
|------------------------|--------------|--------|
| Type                   | Status       | View   |
| Residential (For Sale) | New          | Inland |
| Listing Type           | Bed          | Bath   |
| Condominium Time Share | 2            | 2      |
| Sq Ft                  | Block/Parcel | Area   |
| 831                    | 14E / 795H30 | 30     |
| Year Built             |              |        |
| 2009                   |              |        |

## Additional Features

|           |                  |               |          |
|-----------|------------------|---------------|----------|
| How Shown | Land Certificate | Possession    | Title    |
| Drive by  | Issued           | At Completion | Freehold |