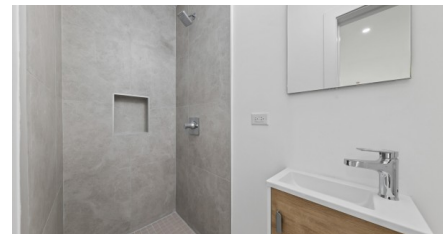
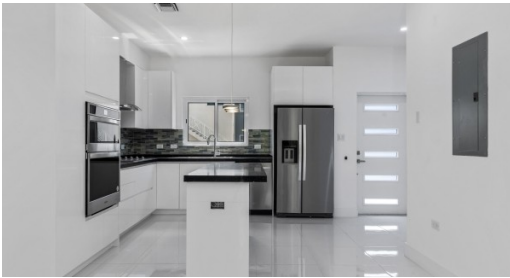


## Yarl 2 Bed Townhouse #105 Phase 3

George Town East

MLS# 418895

**CI\$579,000**





**Zane Kuttner**

+1 (345) 321-4611

zane.kuttner@remax.ky

**LAST CHANCE FOR PRE-CONSTRUCTION PRICING**

Introducing George Town's newest, multi-phase residential community, YARL! YARL is filled with amenities including a lovely pool area, pickleball court gym, club house and kids play area to name a few. This gated community is conveniently located on Linford Pierson Highway next to Downtown Reach. The location is amazing with direct proximity to schools, Grand Harbour, Harbour Reach, supermarkets, George Town Hospital and direct access to Seven Mile Beach Corridor. This neighbourhood will feature 1 bed, 1 bed plus den, 2 bed and 3 bed options - perfect for a primary residence or rental investment.

Built to withstanding all weather as well as being energy efficient these homes are constructed with super strong concrete block, hurricane impact windows and doors as well as a standing seam metal roof. Rest assured knowing the Developer, National Builders, has completed numerous fantastic communities in Cayman over the past couple decades. Ready to move in Q1 2026. Inquire today to receive an Information and Sales Brochure! Photos of similar unit.

**Property Features**

<b>Type</b> Residential (For Sale)	<b>Status</b> Current	<b>View</b> Garden View
<b>Listing Type</b> Condominium Time Share	<b>Bed</b> 2	<b>Bath</b> 3
<b>Sq Ft</b> 1,208	<b>Block/Parcel</b> 20D / 472H15-6	<b>Area</b> 40
<b>Year Built</b> 2026		

**Additional Features**

<b>How Shown</b> Drive by	<b>Land Certificate</b> Issued	<b>Possession</b> At Completion	<b>Title</b> Freehold
------------------------------	-----------------------------------	------------------------------------	--------------------------