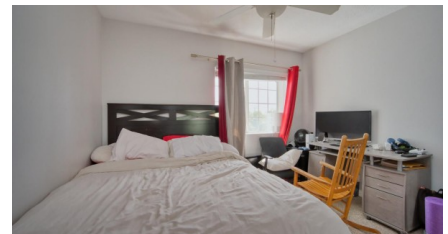
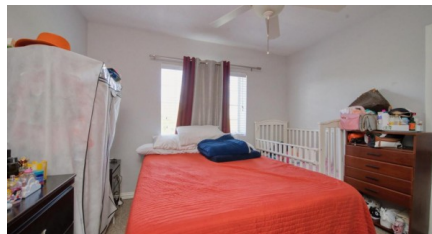


**#120C LAKESIDE 2 BED CONDO**

George Town Centr

MLS# 418597

**CI\$405,000**





**Zane Kuttner**

+1 (345) 321-4611

[zane.kuttner@remax.ky](mailto:zane.kuttner@remax.ky)

Discover exceptional value in this inviting 2-bedroom, 2-bathroom unit at Lakeside. This property not only offers comfort and convenience but also boasts a variety of amenities, including a serene lake, a fitness gym, a refreshing pool, and beautifully landscaped gardens—all managed on-site.

Recent renovations have modernized the unit, featuring updated air conditioning and other enhancements, making it move-in ready. This property presents a fantastic investment opportunity, as it comes with an existing tenant if the buyer is interested in maintaining a rental income.

Situated in an excellent location, this unit provides easy access for professionals working along the bustling Seven-Mile Corridor. Enjoy neighboring conveniences such as diverse restaurants, vibrant bars, social spaces, grocery options, and retail shopping. Additionally, you can explore the attractions of Camana Bay, including a cinema and commercial offices, along with easy walking access to Eastern Avenue.

For further information or to schedule a viewing, please don't hesitate to contact us.

**Property Features**

<b>Type</b> Residential (For Sale)	<b>Status</b> Current	<b>View</b> Garden View, Lake View
<b>Listing Type</b> Condominium Time Share	<b>Bed</b> 2	<b>Bath</b> 2
<b>Sq Ft</b> 733	<b>Block/Parcel</b> 13D / 261H135	<b>Area</b> 30
<b>Year Built</b> 2007		

**Building Features**

<b>Dishwasher</b> Yes	<b>Microwave</b> Yes	<b>Oven</b> Yes	<b>Disposal</b> Yes
<b>TV</b> Cable/Sat	<b>Air Conditioning</b> MULTI-ZONE	<b>Refrigerator</b> Yes	<b>Washer/Dryer</b> Yes
<b>Pool</b> Yes	<b>Tennis</b> Yes	<b>Fence</b> Yes	<b>Occupant</b> None
<b>Sewer</b> Yes	<b>City Water</b> Yes	<b>Dining Area</b> Yes	<b>Breakfast</b> Yes
<b>Kitchen</b> Yes	<b>Living Room</b> Yes	<b>Utility</b> Yes	<b>Family Room</b> Yes

**Pets**  
**Yes**

## **Additional Features**

<b>How Shown</b> <b>By Appointment/List</b>	<b>Floor Level</b> <b>1</b>	<b>Stories/Building</b> <b>4</b>	<b>Number of Units</b> <b>36</b>
<b>Stories/Condo</b> <b>1</b>	<b>Monthly Maintenance</b> <b>Cost</b> <b>US\$ 1</b>	<b>Approx. Water Frontage</b> <b>400</b>	<b>Construction</b> <b>Concrete</b>
<b>Class</b> <b>Under Construction</b>	<b>Land Certificate</b> <b>Not Issued</b>	<b>Possession</b> <b>At Completion</b>	<b>Title</b> <b>Freehold</b>
<b>Insurance in Maint. Costs</b> <b>Yes</b>	<b>Sewage in Maint. Costs</b> <b>Yes</b>	<b>Foundation</b> <b>Slab</b>	<b>Strata</b> <b>2</b>