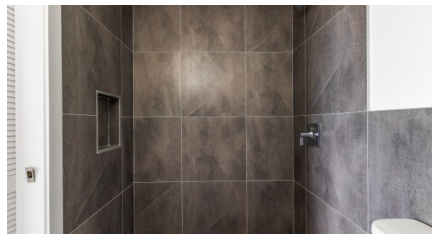
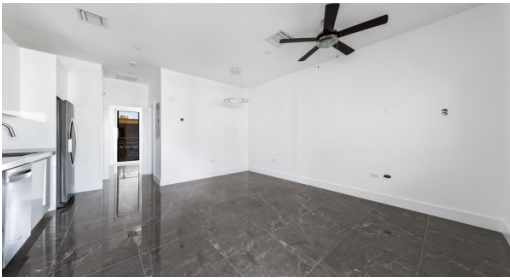


YARL 1 BED #22 PHASE 2

George Town East

MLS# 417128

CI\$399,000





Zane Kuttner

+1 (345) 321-4611

zane.kuttner@remax.ky

Introducing George Town's newest, multi-phase residential community, YARL! With the incredible demand of Phase 1, we are now launching Phase 2! YARL is filled with amenities including a lovely pool area, pickleball court, gym, clubhouse and kids play area to name a few. This gated community is conveniently located on Linford Pierson Highway next to Downtown Reach. The location is amazing with direct proximity to schools, Grand Harbour, Harbour Reach, supermarkets, George Town Hospital and direct access to Seven Mile Beach Corridor. This neighbourhood will feature 1 bed, 1 bed plus den, 2 bed and 2 bed plus den options - perfect for a primary residence or rental investment.

Built to withstanding all weather as well as being energy efficient these homes are constructed with super strong concrete block, hurricane impact windows and doors as well as a standing seam metal roof. Rest assured knowing the Developer, National Builders, has completed numerous fantastic communities in Cayman over the past couple decades. Estimated completion is Q1 2025. Inquire today for your Information and Sales Brochure!

Photos of similar unit.

Property Features

Type Residential (For Sale)	Status Pen/Con	View Garden View, Pool View
Listing Type Condominium Time Share	Bed 1	Bath 1
Sq Ft 646	Block/Parcel 20D / 472H3-22	Area 40
Year Built 2025		

Building Features

Oven Electric	TV Cable	Air Conditioning Central	Refrigerator Yes
Washer/Dryer Yes	Occupant None	Sewer Yes	City Water Yes
Dining Area Yes	Kitchen Yes	Living Room Yes	
Pets Yes			

Additional Features

Floor Level 2	Stories/Building 2	Number of Units 78	Stories/Condo 1
Construction Block	Class Existing	Possession At Completion	Foundation Slab
Strata 407			