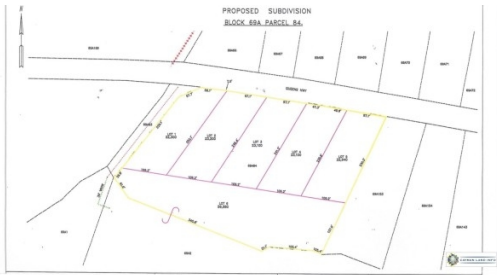


## Queen's Highway Subdivision Lot #4

N.E. Coast

MLS# 416869

**CI\$130,000**



**Zane Kuttner**

+1 (345) 321-4611

zane.kuttner@remax.ky

Perfect location to build a spacious home or cottage for those weekend getaways that you and your family will enjoy for many years to come. Let the soothing breeze and tranquility of East End captivate you. There are just 5 Lots within this new subdivision along Queen's Hwy. Ideal location just minutes from Morritts Resort, Wyndham Reef Resort, an array of Restaurants, Fosters Grocery and more!

Subdivision is pending CPA approval.

## Property Features

Type	Status	View
Land (For Sale)	Pen/Con	Garden View
Listing Type	Width	Depth
Low Density Residential	109.00	235.00
Block/Parcel	Area	
69A / 84L4	70	

## **Additional Features**

**Road Surface**  
**Asphalt**

**How Shown**  
**Drive by**

**Soil**  
**Sand**

**Topography**  
**Level**

**Zoning**  
**Low Density residential**

**Road Frontage**  
**100**

**Trees**  
**Heavily Wooded**

**Frontage Road**  
**City Maintained**

**Possession**  
**At Completion**