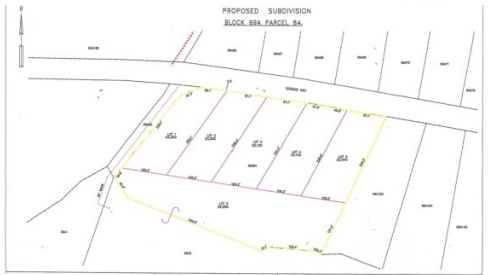


Queen's Highway Subdivision Lot #3

N.E. Coast

MLS# 416868

CI\$130,000



Zane Kuttner

+1 (345) 321-4611

zane.kuttner@remax.ky

Perfect location to build a spacious home or cottage for those weekend getaways that you and your family will enjoy for many years to come. Let the soothing breeze and tranquility of East End captivate you. There are just 5 Lots within this new subdivision along Queen's Hwy. Ideal location just minutes from Morritts Resort, Wyndham Reef Resort, an array of Restaurants nearby, Fosters Grocery and more!

Subdivision is pending CPA approval. December 2023 anticipated for approval.

Property Features

Type
Land (For Sale)

Status
Pen/Con

View
Garden View

Listing Type
Low Density Residential

Width
109.00

Depth
241.00

Block/Parcel
69A / 84L3

Area
70

Additional Features

Road Surface
Asphalt

How Shown
Drive by

Soil
Marl

Topography
Level

Zoning
Commercial
Neighbourhood

Road Frontage
170

Trees
Partial Covered

Frontage Road
City Maintained

Possession
At Closing